

7.237  
7.220  
7.217  
7.187  
7.184  
7.179  
7.168  
7.165  
7.158  
7.087  
7.082  
7.060  
7.022  
7.017  
7.008  
7.006  
7.002  
6.997  
6.990  
6.144

3.957  
3.941  
3.924

3.350

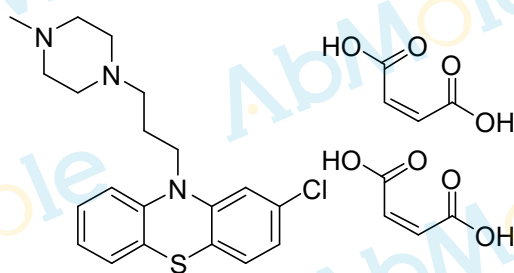
3.050  
2.680  
2.600  
2.584  
2.568  
2.511  
2.507  
2.503  
2.498  
2.493  
1.859  
1.841  
1.824

-0.000

M5900-Prochlorperazine dimaleate salt-01

Chemical Formula: C<sub>28</sub>H<sub>32</sub>ClN<sub>3</sub>O<sub>8</sub>S

Molecular Weight: 606.09



CAS: 84-02-6

DMSO-d<sub>6</sub>, 400 MHz

2.03  
2.04  
1.00  
2.01

4.00

2.10

4.22

4.24

3.03

2.09

2.00

8

7

6

5

4

3

1

0

PPM